

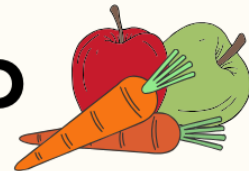
# SUPPORT



**DONATE ONLINE:**



**\$1 = 1 LB OF FOOD**



Your financial support allows us to stretch every dollar. By working directly with suppliers, we can purchase food and produce at a fraction of the cost. Often at prices under \$1 per pound! It also helps us pay for other critical expenses.

SVFB is a 501(c) (3) nonprofit, tax-exempt, publicly supported organization. All donations made to the food bank are tax deductible:  
EIN 46-4388454

**[WWW.SNOQUALMIEVALLEYFOODBANK.ORG](http://WWW.SNOQUALMIEVALLEYFOODBANK.ORG)**